

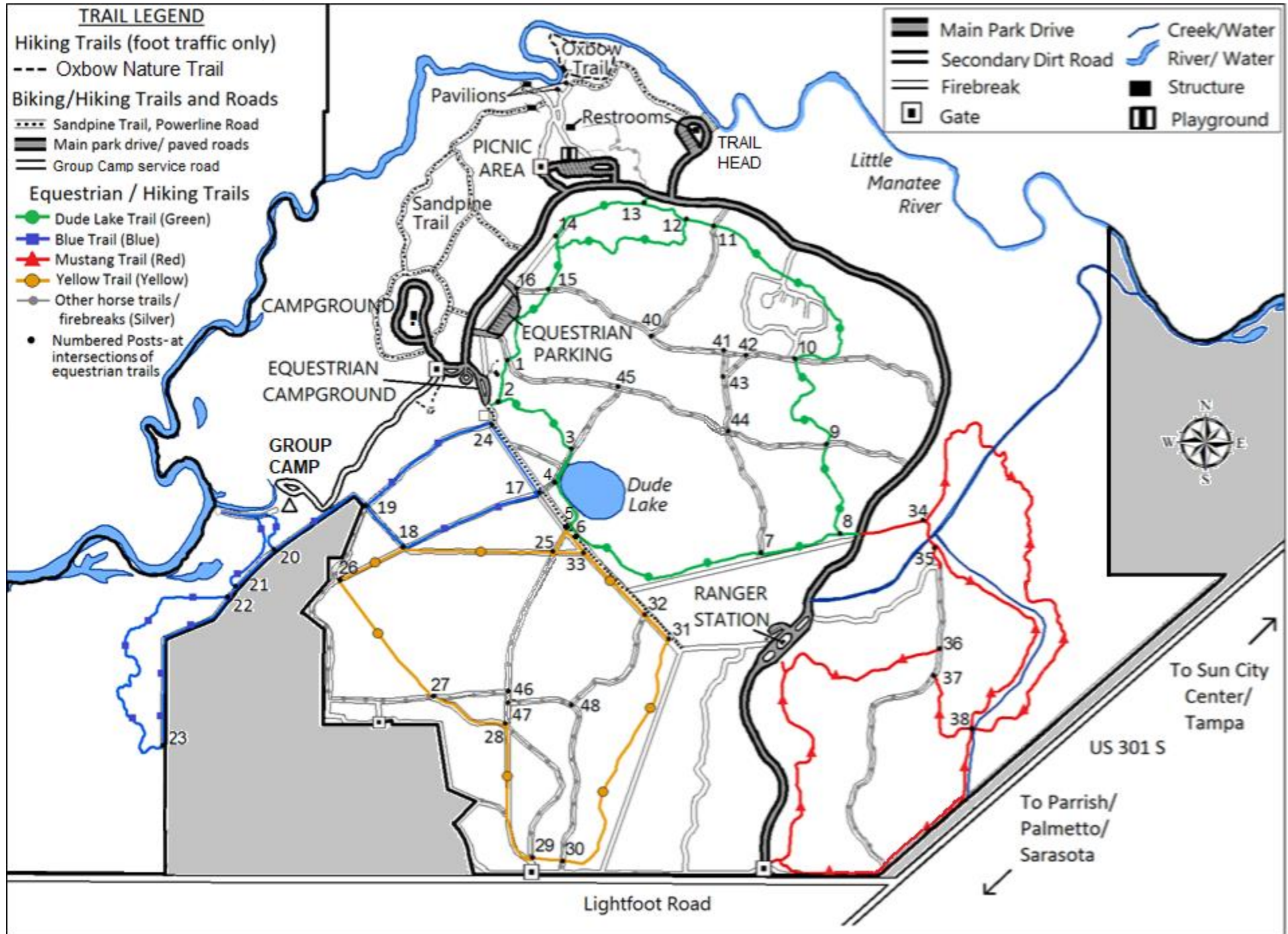
# TRAILS MAP

# LITTLE MANATEE RIVER STATE PARK

# SOUTH

215 Lightfoot Rd. Wimauma, FL 33598 • [www.floridastateparks.org](http://www.floridastateparks.org)

Ranger Station (12pm-5pm): 813-671-5005 • **Emergency: 911** • After Hours: 813-299-4143

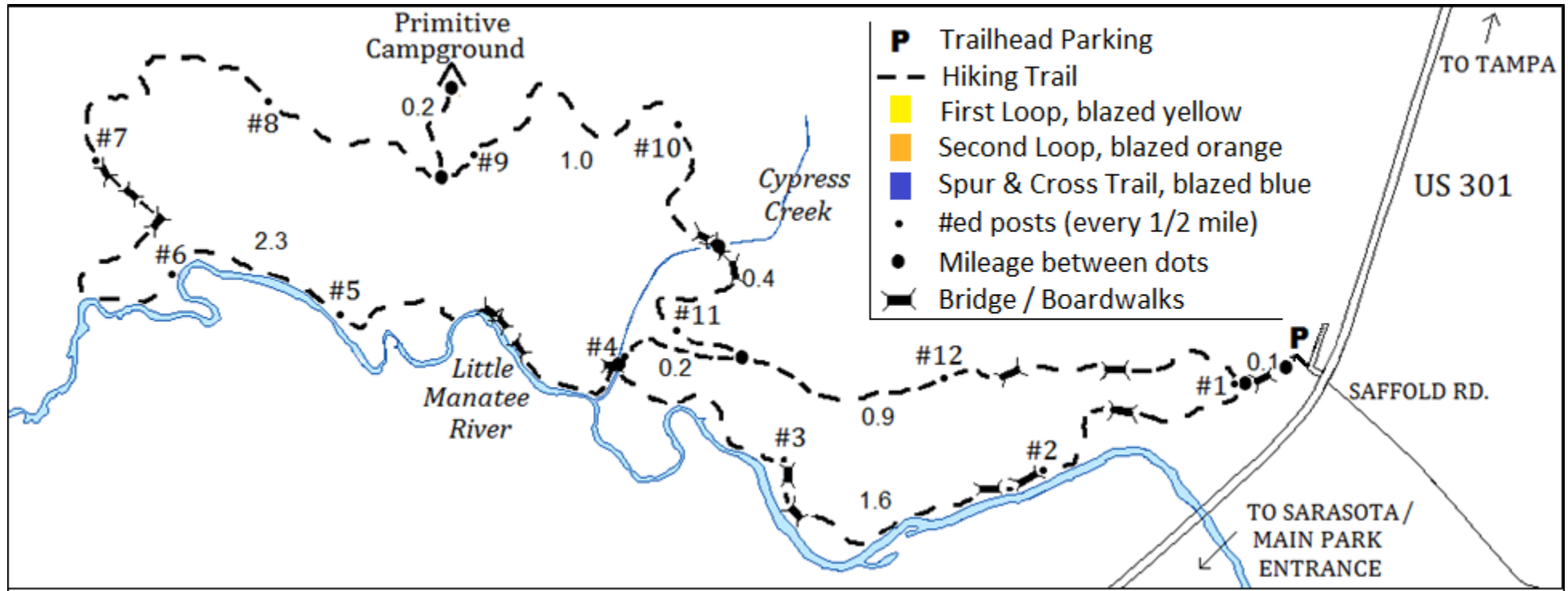


# LITTLE MANATEE RIVER STATE PARK

NORTH

215 Lightfoot Rd. Wimauma, FL 33598 • [www.floridastateparks.org](http://www.floridastateparks.org)

Ranger Station (12pm-5pm): 813-671-5005 • **Emergency: 911** • After Hours: 813-299-4143



**North Hiking Trail** – The 6.5 mile hiking trail is in the wilderness area on the North side of the Little Manatee River. A cross trail splits the long loop in half, making two loops approximately 3 miles each. Access the trail from a separate entrance off US 301 S, immediately north of the river, directly across from Saffold Rd. The park entrance fee can be paid at the trailhead entrance honor box or the Ranger Station at the main park entrance on Lightfoot Rd. Please display proof of payment in your vehicle at the trailhead parking lot. Annual pass holders must get a receipt at the main park entrance Ranger Station or use the honor envelope and write their pass number on it. The hang tag goes in your vehicle and the envelope goes in the honor box to be included in daily visitation counts.

**Primitive Campsite** – A primitive backpacking site is located 2.5 miles from the trailhead, off the main hiking trail. The site can be reserved by individuals or small groups (up to 8 people) and includes a picnic table and fire ring. Reservations are required. For more information and to reserve the primitive campsite call the Ranger Station at 813-671-5005. The camping fee is \$5 (+ tax) per person, per night. Pack it in, pack it out.